



THE HOME DEPOT[®] CENTER

S I G N P R O G R A M

NORTHWEST CORNER OF HIGHLAND SPRINGS & 2nd STREET
BEAUMONT, CA

1/13/05

Owner / Developer (Home Depot Parcel)

The Home Depot, U.S.A.
3800 West Chapman Ave. Orange, Ca. 92868
Tel. 714.940.3600 Fax. 714.940.3579

Project Architect

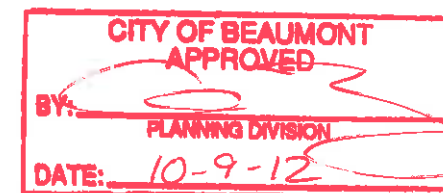
Carter Burgess
4 Hutton Center Drive - Suite 800 Santa Ana, Ca. 92707
Tel. 714.327.1600 Fax. 714.327.1601

Sign Consultant

Architectural Design & Signs
2950 Palisades Dr. Corona, Ca. 92880
Tel. 909.278.0680 Fax. 909.278.0681

Owner / Developer (Out parcels)

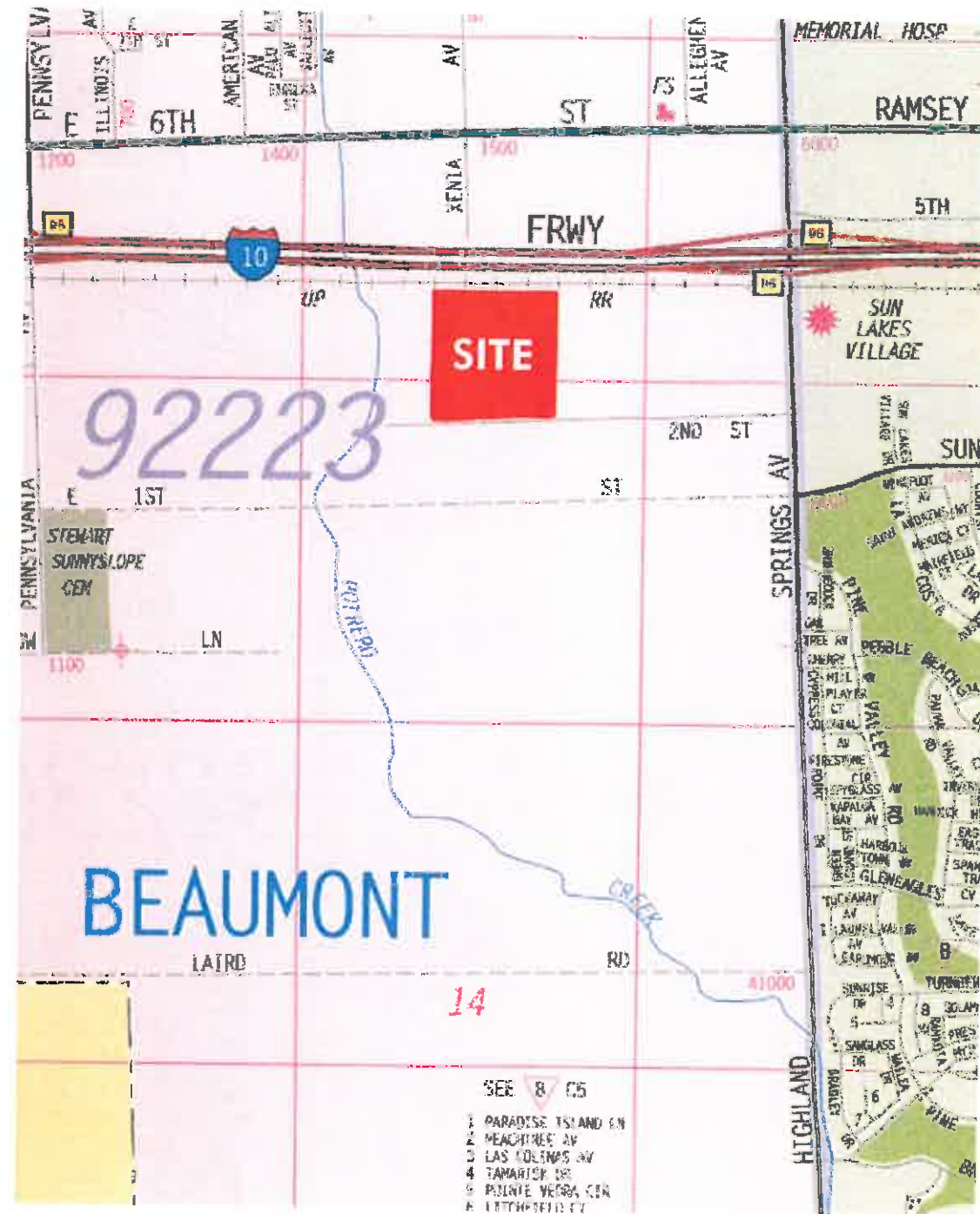
Beaumont Development Group II,
a California limited liability company
Attn: Daniel E. Otter
500 North Rainbow Blvd - Suite 300
Las Vegas, NV 89107
Tel. 702.221.1995 Fax. 702.221.1999



*per Planning Comm.
Approval.*



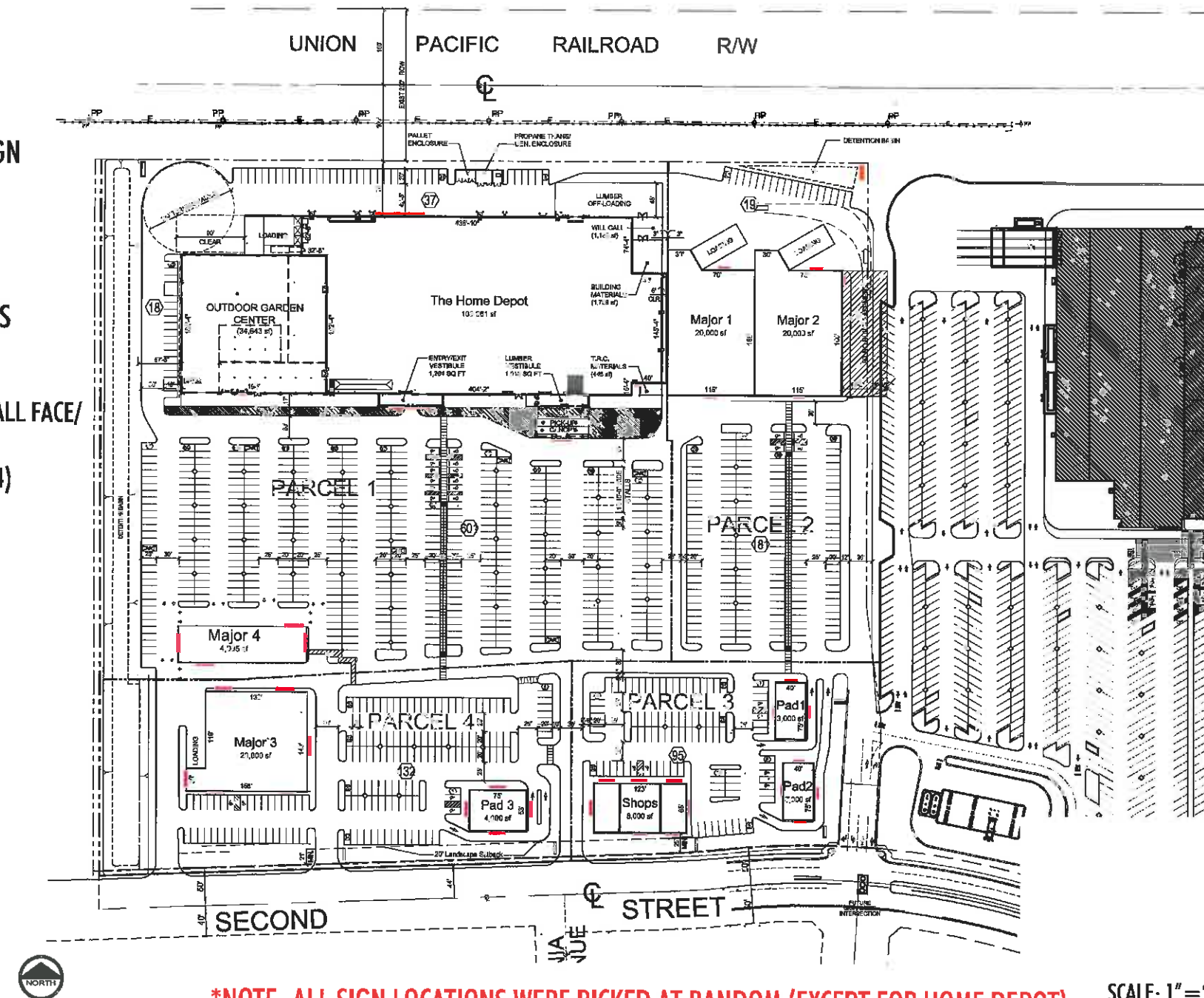
VICINITY MAP



SCALE: NOT TO SCALE

- = FREEWAY ORIENTED PYLON SIGN
- = PYLON SIGN
- = MONUMENT SIGN
- = ANCHOR TENANT SIGNS
- = MAJOR AND PAD TENANT SIGNS

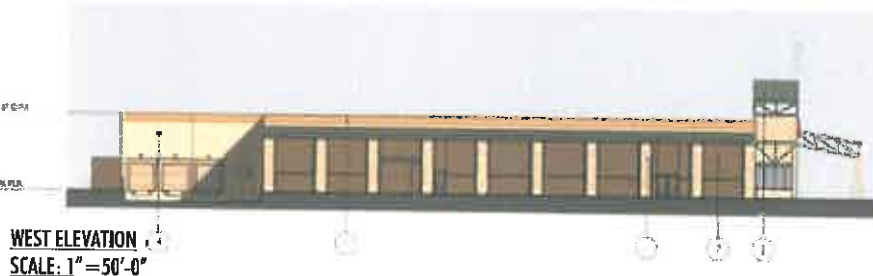
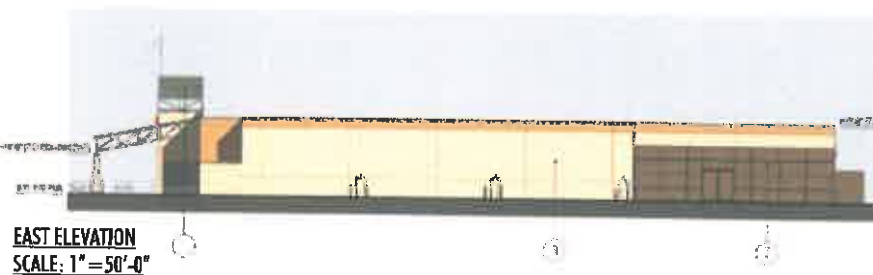
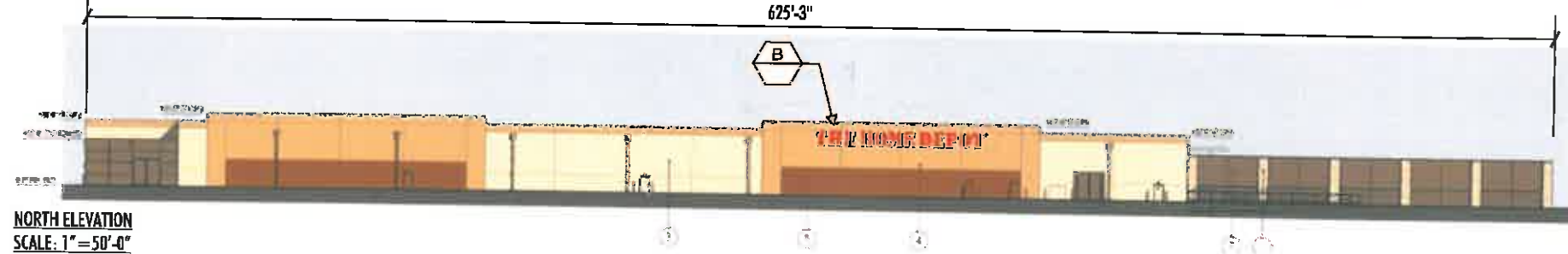
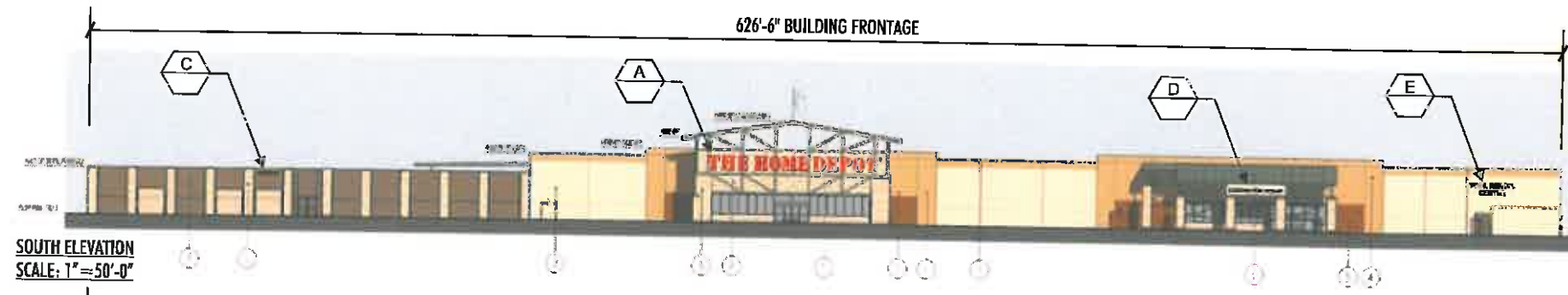
WALL SIGNS:
 ONE (1) WALL SIGN IS PERMITTED FOR EACH WALL FACE/
 ELEVATION OF THE ESTABLISHMENT/BUSINESS
 PROVIDED THERE ARE NOT MORE THAN FOUR (4)
 WALL SIGNS FOR ANY ONE BUSINESS.



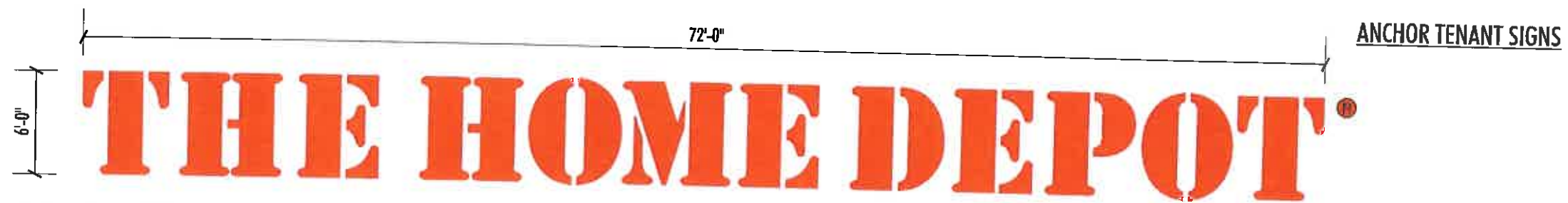
***NOTE: ALL SIGN LOCATIONS WERE PICKED AT RANDOM (EXCEPT FOR HOME DEPOT)
 FINAL LOCATIONS TO BE DETERMINED BY OWNER/LANDLORD**

SCALE: 1" = 200'-0"

ANCHOR TENANT ELEVATIONS



- MATERIAL AND COLOR**
- ① STANDING BEAM METAL ROOF & WIDE FLANGE STEEL FRAMING - COLOR TO MATCH 'HEMLOCK GREENE' BY USA-CI AD
 - ② PLASTER FINISH OR EPS - COLOR TO MATCH SCI 551, VANILLA TAN
 - ③ TILT-UP CONCRETE PANELS - COLOR TO MATCH SCI 551, VANILLA TAN
 - ④ TILT-UP CONCRETE PANELS - COLOR TO MATCH SCI 554, PALM SPRING TAN
 - ⑤ TILT-UP CONCRETE PANELS - COLOR TO MATCH SCI 456, CANNAS BACK
 - ⑥ SPLIT FACE CMU - COLOR TO MATCH CHAMPAGNE BY ANGELUS BLOCK
 - ⑦ BLACK VINYL-COATED GALVANIZED CHAIN LINK FENCE



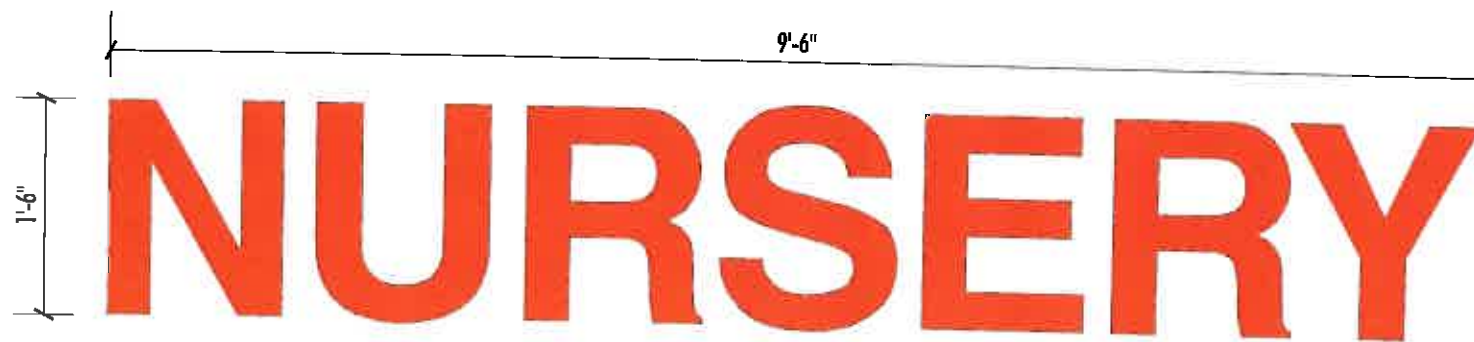
A **B** ILLUMINATED INDIVIDUAL SELF CONTAINED CHANNEL LETTERS
 SCALE: 1/8" = 1'-0"

QTY: TWO (2) SETS
 AREA: 432 SQ. FT.

INDIVIDUAL SELF CONTAINED CHANNEL LETTERS.
 ORANGE ACRYLIC FACES WITH BRONZE RETURNS AND TRIM CAPS.
 LED ILLUMINATION.
 REGISTRATION MARK TO BE 3/4" SINTRA PAINTED ORANGE WITH BLACK VINYL OVERLAY.

NOTE: ALL PAINT TO BE MATTHEWS ACRYLIC POLYURETHANE COATING SYSTEM - VOLATILE ORGANIC COMPOUNDS (VOC)

ELECTRICAL:
 ONE (1) 120V 20 AMP DEDICATED SIGN CIRCUIT REQUIRED



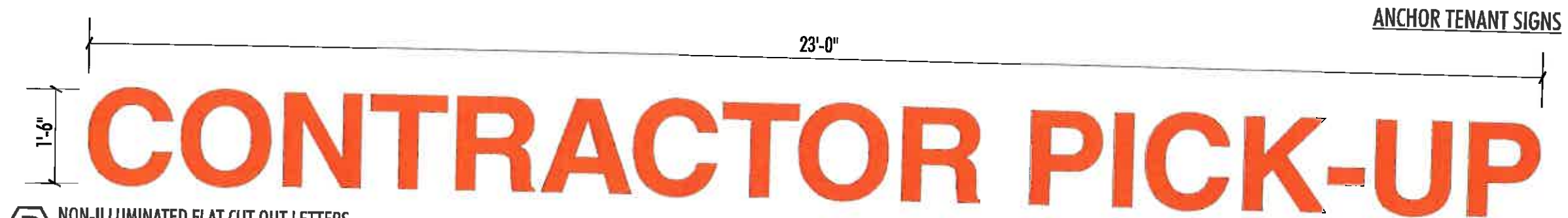
C ILLUMINATED INDIVIDUAL CHANNEL LETTERS
 SCALE: 3/4" = 1'-0"

QTY: ONE (1) SET
 AREA: 14.25 SQ. FT.

ILLUMINATED CHANNEL LETTERS
 15mm 6500 WHITE NEON ILLUMINATION WITH REMOTE TRANSFORMER
 FACES TO BE 2119 ORANGE PLEX
 RETURNS AND TRIMCAP PAINTED DURANODIC BRONZE

NOTE: ALL PAINT TO BE MATTHEWS ACRYLIC POLYURETHANE COATING SYSTEM - VOLATILE ORGANIC COMPOUNDS (VOC)

ELECTRICAL:
 ONE (1) 120V 20 AMP DEDICATED SIGN CIRCUIT REQUIRED

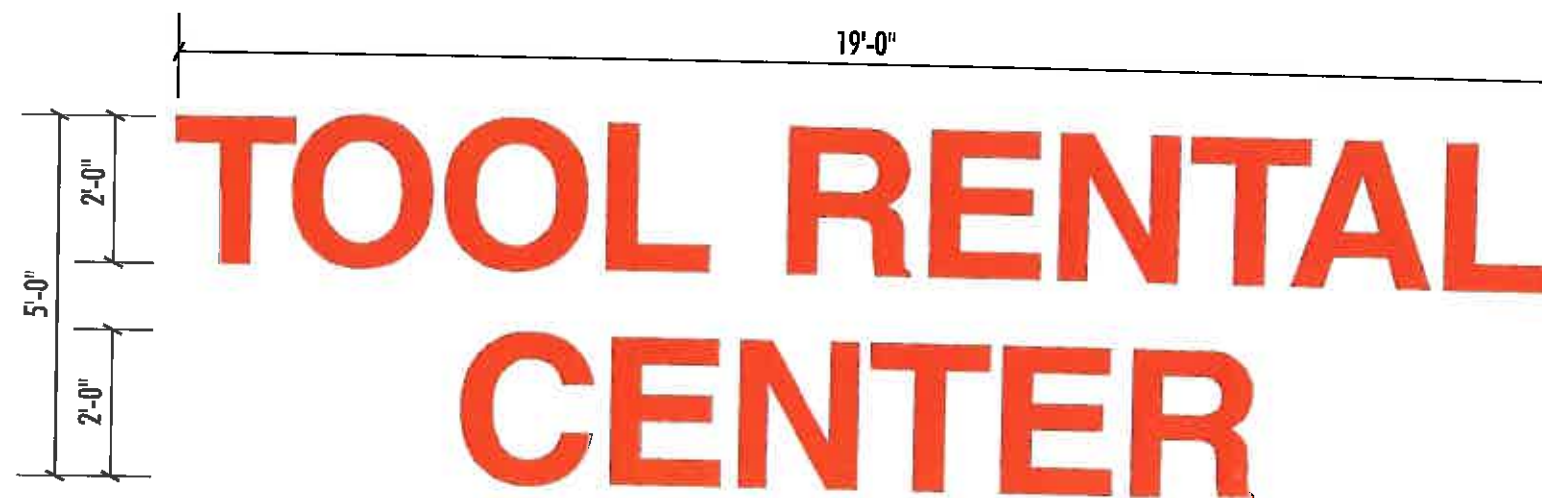


D NON-ILLUMINATED FLAT CUT OUT LETTERS
SCALE: 1/2" = 1'-0"

FACES PAINTED TO MATCH ROHM & HAAS 2119 ORANGE.

QTY: ONE (1) SET
AREA: 34.5 SQ. FT.

NOTE: ALL PAINT TO BE MATTHEWS ACRYLIC POLYURETHANE COATING SYSTEM - VOLATILE ORGANIC COMPOUNDS (VOC)



E ILLUMINATED INDIVIDUAL CHANNEL LETTERS
SCALE: 3/8" = 1'-0"

QTY: ONE (1) SET
AREA: 60 SQ. FT.

ILLUMINATED CHANNEL LETTERS
15mm 6500 WHITE NEON ILLUMINATION WITH REMOTE TRANSFORMER
FACES TO BE 2119 ORANGE PLEX
RETURNS AND TRIMCAP PAINTED DURANODIC BRONZE

NOTE: ALL PAINT TO BE MATTHEWS ACRYLIC POLYURETHANE COATING SYSTEM - VOLATILE ORGANIC COMPOUNDS (VOC)

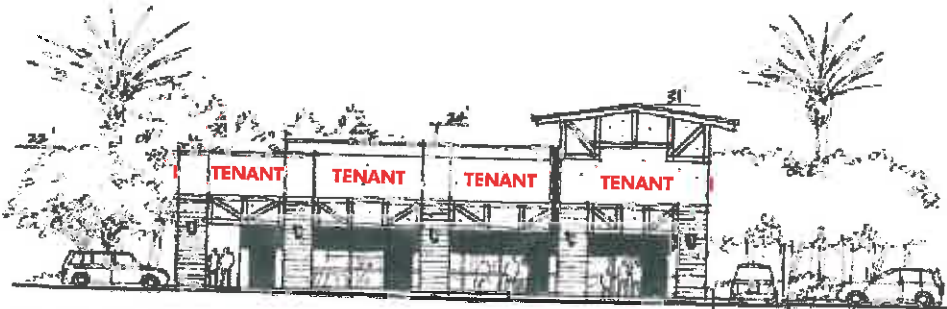
ELECTRICAL:
ONE (1) 120V 20 AMP DEDICATED SIGN CIRCUIT REQUIRED

MAJOR & PAD TENANT ELEVATIONS

***NOTE: ALL SIGN LOCATIONS WERE PICKED AT RANDOM
FINAL LOCATIONS TO BE DETERMINED BY OWNER/LANDLORD**

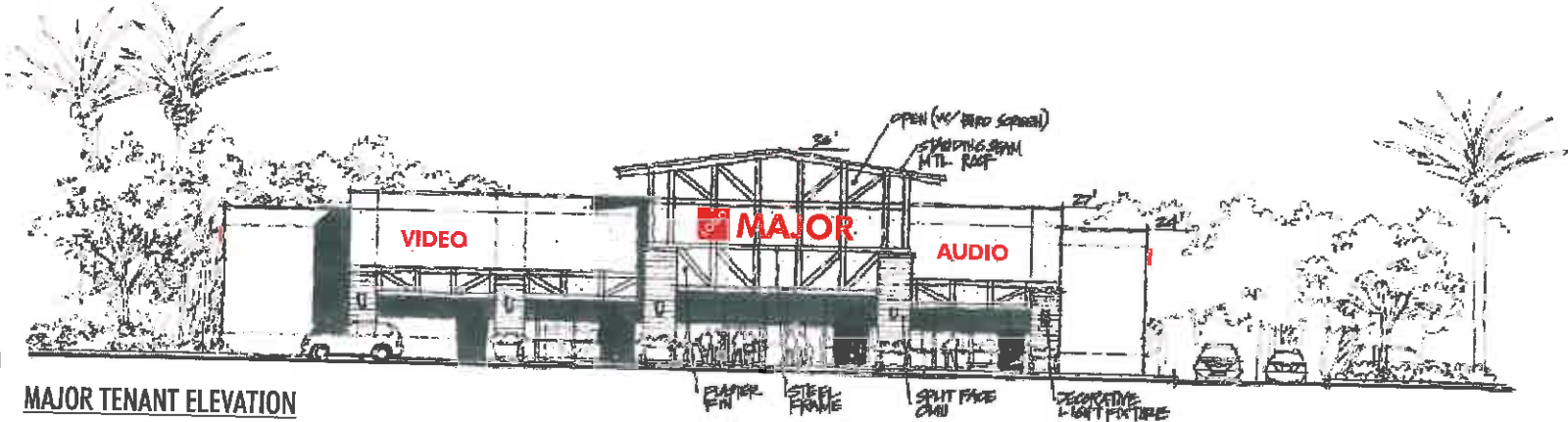
WALL SIGNS:
ONE (1) WALL SIGN IS PERMITTED FOR EACH WALL FACE/ELEVATION OF THE ESTABLISHMENT/BUSINESS PROVIDED THERE ARE NOT MORE THAN FOUR (4) WALL SIGNS FOR ANY ONE BUSINESS.

MAXIMUM AREA FOR SIGNS:
1.00 SQ. FT. OF SIGN AREA PER EACH LINEAR FOOT OF LEASED BUILDING FRONTAGE WITH A MAXIMUM OF 100 SQ. FT. WALL SIGNS SHALL NOT OCCUPY MORE THAN 70% OF THE STOREFRONT OR UNIT WIDTH.



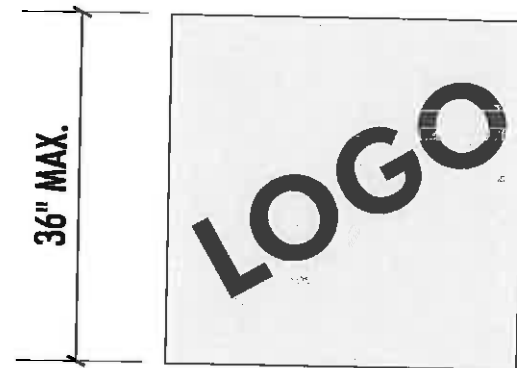
PAD TENANT ELEVATION
SCALE: 1" = 30'-0"

***NOTE: QUANTITY AND SIZE OF MAJOR BUILDING SIGNAGE MAY BE INCREASED PENDING LANDLORD & PLANNING DIRECTOR ADMINISTRATIVE APPROVAL (TO BE TREATED ON A CASE BY CASE BASIS)**



MAJOR TENANT ELEVATION
SCALE: 1" = 30'-0"

TENANT CHANNEL LETTER DETAILS

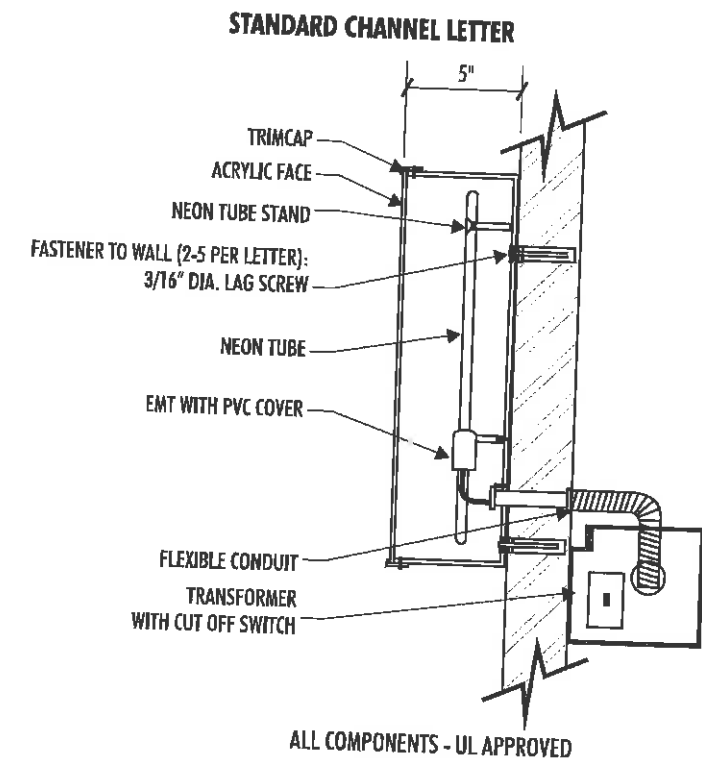


SPECIFICATIONS:

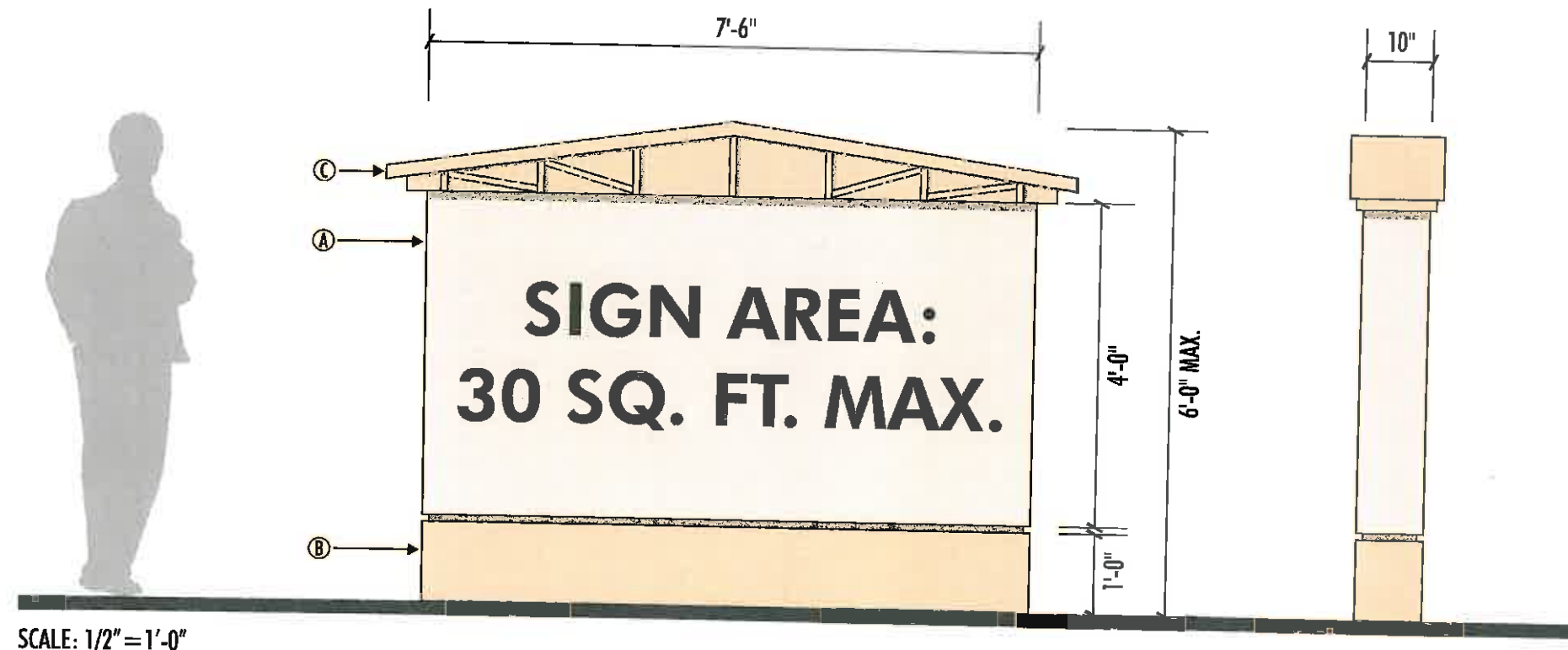
- 5" DEEP STANDARD INDIVIDUAL ILLUMINATED CHANNEL LETTERS.
- FACE COLORS MAY BE PER TENANTS CORPORATE COLORS.
- RETURNS TO BE .063 ALUMINUM PAINTED BRONZE.
- TRIM CAP TO BE PAINTED BRONZE.
- ILLUMINATION TO BE NEON AND COLOR TO BE DETERMINED BY COLOR OF FACE.

MAXIMUM AREA FOR SIGNS:

- 1.00 SQ. FT. OF SIGN AREA PER EACH LINEAR FOOT OF LEASED BUILDING FRONTAGE WITH A MAXIMUM OF 100 SQ. FT.
- WALL SIGNS SHALL NOT OCCUPY MORE THAN 70% OF THE STOREFRONT OR UNIT WIDTH.



MONUMENT SIGN



SCALE: 1/2" = 1'-0"

SPECIFICATIONS:

- Ⓐ INTERNALLY ILLUMINATED DOUBLE FACED CABINET PAINTED LIGHT BEIGE COLOR TO MATCH BUILDING. COPY TO BE ROUTED AND BACKED UP WITH ACRYLIC. (COLORS TO BE DETERMINED) ILLUMINATION TO BE FLOURESCENT LAMPS.
- Ⓑ ALUMINIUM BASE TO BE PAINTED TO MATCH BUILDING WITH A MEDIUM STUCCO FINISH.
- Ⓒ ALUMINIUM ROOF TO BE PAINTED TO MATCH BUILDING WITH FLAT BAR ACCENTS.

REQUIREMENTS FOR ELECTRICAL ILLUMINATION:

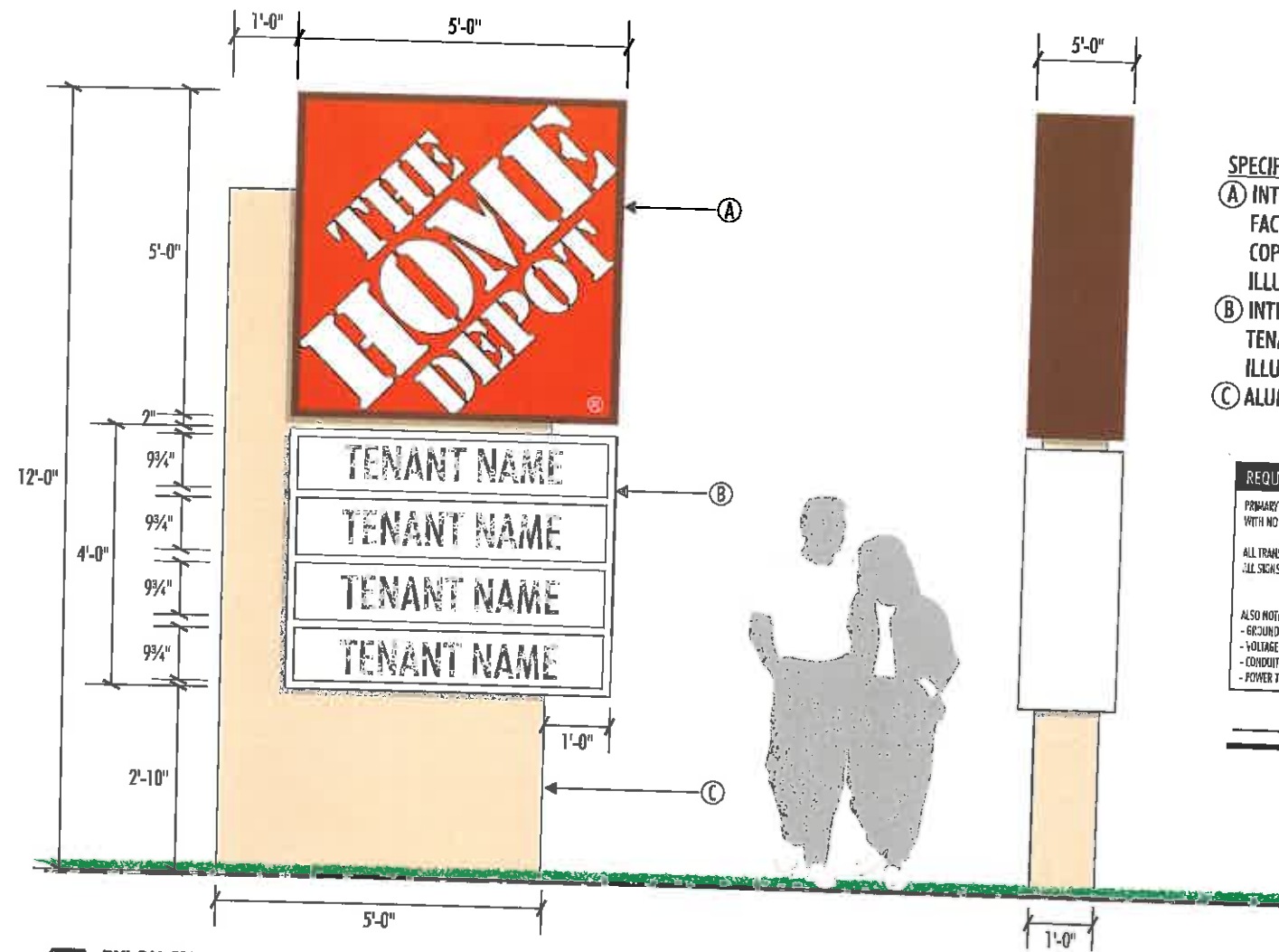
PRIMARY ELECTRICAL TO SIGN LOCATIONS TO BE PROVIDED BY OTHERS. A DEDICATED CIRCUIT WITH NO SHARED NEUTRALS AND A GROUND RETURNING TO THE PANEL IS REQUIRED FOR INSTALLATION.

ALL TRANSFORMERS SHALL BE (GFI) GROUND FAULT-INTERUPTED TRANSFORMERS.
 ALL SIGNS HAVE - DEDICATED BRANCH CIRCUIT
 - THREE WIRES - LINE, NEUTRAL, & GROUND
 - WIRE SIZE - MINIMUM OF 12 GA. THIN COPPER WIRE

ALSO NOTE: GAUGE OF WIRE IS DETERMINED BY THE LENGTH OF RUN & AMPERAGE AS PER NEC ARTICLE 300.
 - GROUND WIRE MUST BE CONTINUOUS AND GO FROM THE SIGN TO THE PANELBOARD GROUND BUS.
 - VOLTAGE SHOULD READ NO MORE THAN 3 VOLTS BETWEEN GROUND AND NEUTRAL.
 - CONDUIT CAN NOT BE USED AS GROUND PATH.
 - POWER TO SIGN MUST BE DONE BY A LICENSED ELECTRICIAN OR ELECTRICAL CONTRACTOR.

_____ Amps _____ Volts _____ Dedicated Circuits

PYLON SIGN



SPECIFICATIONS:

- Ⓐ INTERNALLY ILLUMINATED DOUBLE FACED CABINET PAINTED DURANODIC BRONZE.
FACE TO BE WHITE ACRYLIC WITH ORANGE (230-44) VINYL OVERLAY.
COPY TO BE WHITE SHOW THRU WITH BLACK (230-22) VINYL OUTLINE OVERLAY.
ILLUMINATION TO BE FLOURESCENT LAMPS.
- Ⓑ INTERNALLY ILLUMINATED TENANT CABINET WITH DIVIDER BARS. (PAINT COLOR TO BE DETERMINED)
TENANT COPY TO BE ACRYLIC FACES WITH VINYL COPY OVERLAY. (COPY & COLORS TO BE DETERMINED)
ILLUMINATION TO BE FLOURESCENT LAMPS.
- Ⓒ ALUMINUM POLE COVER PAINTED TO MATCH BUILDING COLOR WITH A MEDIUM STUCCO FINISH.

REQUIREMENTS FOR ELECTRICAL ILLUMINATION:
 PRIMARY ELECTRICAL TO SIGN LOCATIONS TO BE PROVIDED BY OTHERS. A DEDICATED CIRCUIT WITH NO SHARED NEUTRALS AND A GROUND RETURNING TO THE PANEL IS REQUIRED FOR INSTALLATION.
 ALL TRANSFORMERS SHALL BE (GFI) GROUND FAULT-INTERRUPTED TRANSFORMERS.
 ALL SIGNS HAVE - DEDICATED BRANCH CIRCUIT
 - THREE WIRES : LINE, NEUTRAL, & GROUND
 - WIRE SIZE - MINIMUM OF 12 GA. THIN COPPER WIRE
 ALSO NOTE: GAUGE OF WIRE IS DETERMINED BY THE LENGTH OF RUN & AMPERAGE AS PER NEC ARTICLE 300.
 - GROUND WIRE MUST BE CONTINUOUS AND GO FROM THE SIGN TO THE PANELBOARD GROUND BUS.
 - VOLTAGE SHOULD READ NO MORE THAN 3 VOLTS BETWEEN GROUND AND NEUTRAL.
 - CONDUIT CAN NOT BE USED AS GROUND PATH.
 - POWER TO SIGN MUST BE DONE BY A LICENSED ELECTRICIAN OR ELECTRICAL CONTRACTOR.

_____ Amps _____ Volts _____ Dedicated Circuits

G PYLON SIGN
 SCALE: 3/8" = 1'-0"

QTY: ONE (1)
 SIGN AREA: 45 SQ. FT.



AD/S
ARCHITECTURAL
DESIGN & SIGNS

2950 Palisades Drive Corona, CA 92880
Tel 951 278 0680 Fax 951 278 0681

Client
THE HOME DEPOT
Project Northwest Corner of Highland Springs
& 2nd Street
Beaumont, CA
Address

PROJECT NO **4527R9**

ITEM **Freeway Oriented Pylon Sign**

PAGE **7** of **8**

DATE **2/3/05**

- REVISIONS
- 3 D.M. - Revise Freeway Oriented Pylon Sign
 - 4 D.M. - Revised Site Plan
 - 5 D.M. - Revised Pylon Sign
 - 6 D.M. - Pylon to be Wal-mart on top
 - 7 D.M. - Reduce Pylon to 75ft. - 2 Options
 - 8 D.M. - Remove Option A on pylon and city name

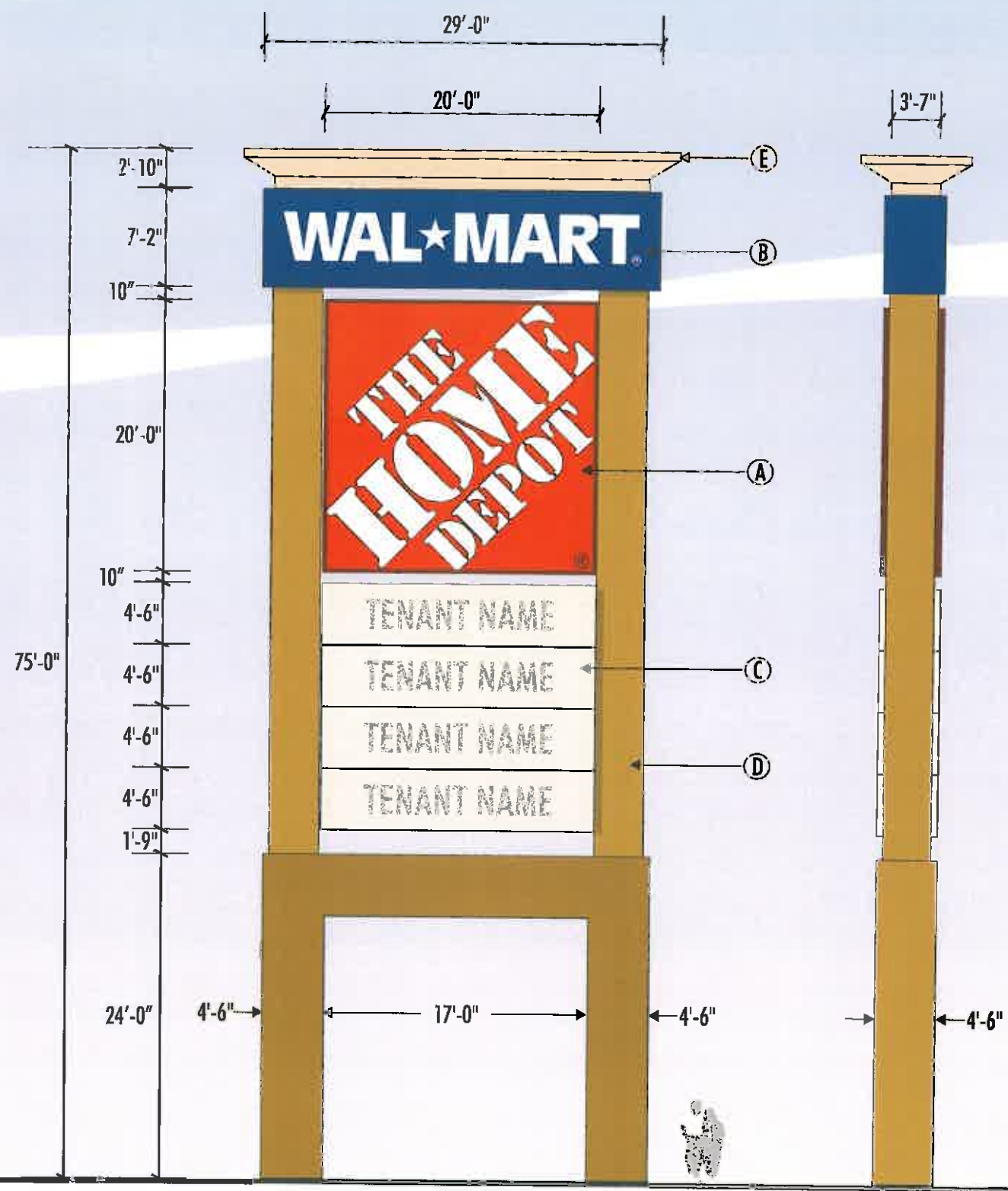
9 M.S. - Revised sizes of pylon. Added sq. ft. To faces
This is an original unpublished drawing created by AD/S Inc. It is submitted for your personal use in conjunction with a project being planned for you by AD/S Inc. It is not to be shown to anyone outside your organization nor is it to be used, reproduced, copied or exhibited in any fashion.

APPROVED _____ DATE _____



SPECIFICATIONS:

- (A) INTERNALLY ILLUMINATED DOUBLE FACED CABINET PAINTED DURANODIC BRONZE. FACE TO BE WHITE FLEXFACE MATERIAL WITH ORANGE (230-44) VINYL OVERLAY. COPY TO BE WHITE SHOW THRU WITH BLACK (230-22) VINYL OUTLINE OVERLAY. ILLUMINATION TO BE FLOURESCENT LAMPS.
- (B) INTERNALLY ILLUMINATED CABINET PAINTED PMS BLUE #280C. FACE TO BE WHITE FLEXFACE MATERIAL WITH DARK BLUE (230-36) VINYL OVERLAY AND WHITE SHOW THRU COPY. ILLUMINATION TO BE FLOURESCENT LAMPS.
- (C) INTERNALLY ILLUMINATED TENANT CABINETS. (PAINT COLOR TO BE DETERMINED) TENANT COPY TO BE ROUTED AND BACKED UP WITH ACRYLIC. (COPY & COLORS TO BE DETERMINED) ILLUMINATION TO BE FLOURESCENT LAMPS.
- (D) ALUMINUM POLE COVER PAINTED TO MATCH BUILDING COLOR WITH A MEDIUM STUCCO FINISH.
- (E) ALUMINUM CANOPY PAINTED TO MATCH PROJECT COLORS. (COLOR TO BE DETERMINED)



REQUIREMENTS FOR ELECTRICAL ILLUMINATION:

PRIMARY ELECTRICAL TO SIGN LOCATIONS TO BE PROVIDED BY OTHERS. A DEDICATED CIRCUIT WITH NO SHARED NEUTRALS AND A GROUND RETURNING TO THE PANEL IS REQUIRED FOR INSTALLATION.

ALL TRANSFORMERS SHALL BE, (GFI) GROUND FAULT-INTERRUPTED TRANSFORMERS.
ALL SIGNS HAVE - DEDICATED BRANCH CIRCUIT
- THREE WIRES : LINE, NEUTRAL, GROUND
- WIRE SIZE : MINIMUM OF 12 GA. THIN COPPER WIRE

ALSO NOTE: GAUGE OF WIRE IS DETERMINED BY THE LENGTH OF RUN & AMPERAGE AS PER NEC ARTICLE 300.
- GROUND WIRE MUST BE CONTINUOUS AND GO FROM THE SIGN TO THE PANELBOARD GROUND BUS.
- VOLTAGE SHOULD READ NO MORE THAN 3 VOLTS BETWEEN GROUND AND NEUTRAL.
- CONDUIT CAN NOT BE USED AS GROUND PATH.
- POWER TO SIGN MUST BE DONE BY A LICENSED ELECTRICIAN OR ELECTRICAL CONTRACTOR.

_____ Amps _____ Volts _____ Dedicated Circuits

F FREeway ORIENTED PYLON SIGN
SCALE: 3/32" = 1'-0"

QTY: ONE (1)
SIGN AREA: 974 SQ. FT.

